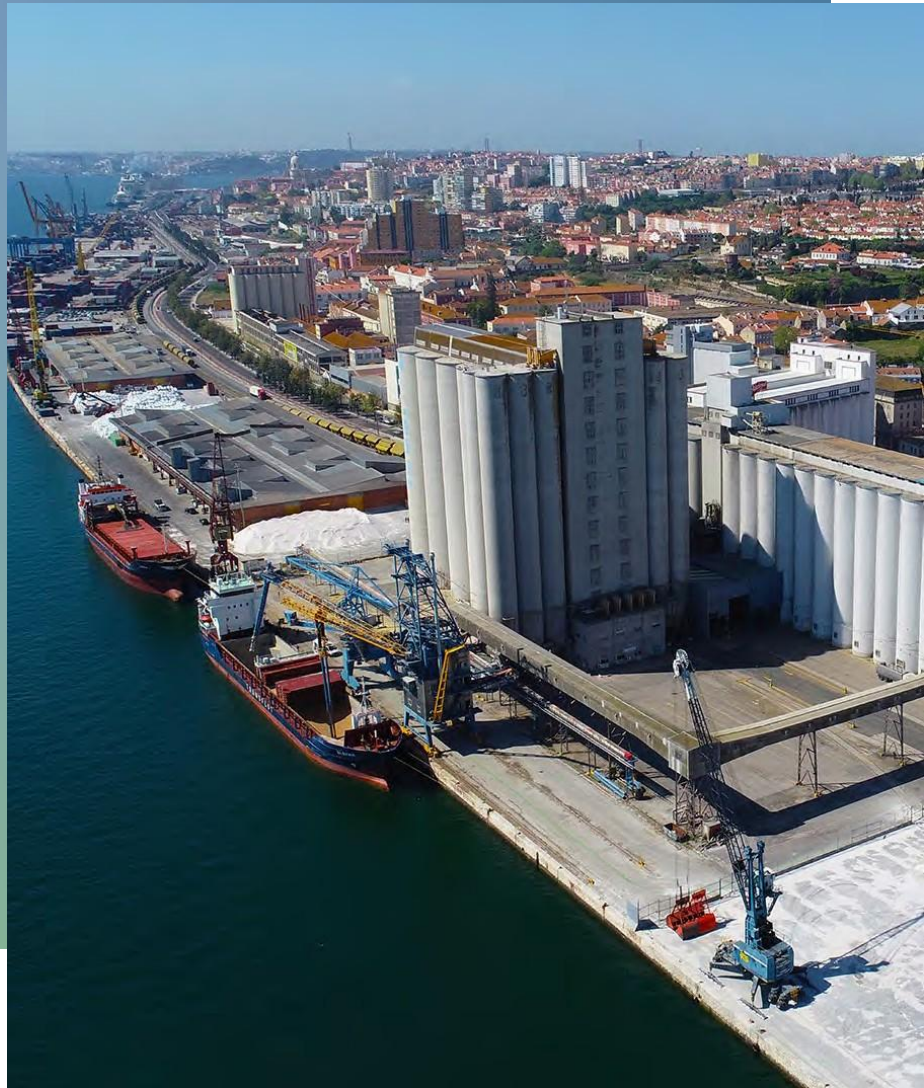


PRICE LIST AND CONDITIONS FOR THE PROVISION OF SERVICES

In force from January 1st to December 31st, 2026

20
26



SiloTagus



Beato Port Terminal (Headquarters)

Rua da Cintura do Porto de Lisboa
1900-263 Lisboa, Portugal
+351 213 923 200 | silotagus@silotagus.pt

Trafaria Port Terminal

Rua das Matas Nacionais
2825-867 Trafaria, Portugal
+351 213 923 351 | silotagus@silotagus.pt

INDEX

1. BEATO PORT TERMINAL	02
2. TRAFARIA PORT TERMINAL	07
3. RIVER TRANSPORT BY BARGE	12
4. GENERAL TERMS AND CONDITIONS OF INVOICING	15
5. CHARGES FOR ADDITIONAL SERVICES	16
6. GENERAL CONDITIONS FOR THE PROVISION OF SERVICES	18
7. FOOD SAFETY GUARANTEE	21
8. OTHER FOOD SAFETY REQUIREMENTS	23
9. LOYALTY AGREEMENT	24

The public service provision at the Beato Port Terminal guarantees the following average daily discharge rates:

- Cereal (grain) discharge: 4000 mt/day
- If vessel cargo < 4000 mt: 1 day discharge

These values are valid in case of:

- "Bulk carrier" type vessels, without obstacles to the operation of the unloaders, non-self-unloading, box shaped, open shelter, and without separators between cargoes nor fumigation bands, and
- Availability of storage space.

Other factors may invalidate the guaranteed discharge rates:

- Products outside standard conditions (pulverulence/dustiness, adhesiveness, presence of foreign materials, product damage, etc.)
- Delay at the start or during discharge due to reasons attributable to the ship or the cargo
- Stoppages due to rain or meteorological conditions that prejudice the operationality of the discharge
- Force Majeure cases: strikes, epidemics, unforeseen equipment failures, power supply cuts, etc.
- Serious breakdowns in unloaders.

1.1

BASE BILLING PRICES FOR BEATO PORT TERMINAL

Vessel discharge service, including storage

8 DAYS

9 - 30 DAYS

31 - 60 DAYS

(Prices vary depending on used storage periods and the tonnage to be discharged at Beato, per vessel - €/mt)

	Until 5 000 mt	5 001 mt to 12 000 mt	More than 12 000 mt	Until 5 000 mt	5 001 mt to 12 000 mt	More than 12 000 mt	Until 5 000 mt	5 001 mt to 12 000 mt	More than 12 000 mt
Grain of European Union origin	7.161	7.077	7.045	8.964	8.836	8.787	12.514	12.349	12.265
Wheat from Third Countries	7.242	7.161	7.124	8.964	8.836	8.787	12.265	12.090	12.025
Corn from Third Countries	8.516	8.495	8.445	12.692	12.692	12.656	16.222	16.222	16.194
Sunflower seeds	13.752	13.179	13.115	18.337	18.061	17.979	18.337	18.061	17.979
Rapeseed and other grain products	7.373	7.256	7.150	11.666	11.489	11.439	15.408	15.199	15.118

Products discharged from vessels at the Beato Terminal, when dispatched up to the 8th day from the start of the discharge, benefit from an additional discount of 5% on the respective discharge price.

STORAGE PRICES FOR PRODUCTS WITH A SPECIFIC WEIGHT OF
60 KG/HL OR GREATER
 AFTER THE 30 OR 60 DAYS ⁽²⁾ INCLUDED IN THE DISCHARGE PRICE

(Depending on the used storage periods - €/mt/day)

Storage period	€/mt/day
61-75 DAYS	0.089
76-90 DAYS	0.122
91-105 DAYS	0.168
106-120 DAYS	0.231
121-135 DAYS	0.305
136-150 DAYS	0.433
> 150 DAYS	0.540

- 1) Storage time starts counting on the 1st day the vessel discharge begins
- 2) Depending on whether the importer has signed up the Loyalty Agreement or not

STORAGE PRICES FOR PRODUCTS WITH A SPECIFIC WEIGHT
LESS THAN 60 KG/HL
 AFTER THE 30 OR 60 DAYS ⁽²⁾ INCLUDED IN THE DISCHARGE PRICE

(Depending on the used storage periods - €/mt/day)

Storage period	€/mt/day
61-75 DAYS	0.105
76-90 DAYS	0.146
91-105 DAYS	0.200
106-120 DAYS	0.279
121-135 DAYS	0.367
136-150 DAYS	0.520
> 150 DAYS	0.649

- 1) Storage time starts counting on the 1st day the vessel discharge begins
- 2) Depending on whether the importer has signed up the Loyalty Agreement or not

STORAGE PRICES FOR PRODUCTS RECEIVED **BY LAND** WITH A SPECIFIC WEIGHT OF **60 KG/HL OR GREATER**

(Depending on the used storage periods - €/mt/day)

Storage period	€/mt/day
61-75 DAYS	0.089
76-90 DAYS	0.122
91-105 DAYS	0.168
106-120 DAYS	0.231
121-135 DAYS	0.305
136-150 DAYS	0.433
> 150 DAYS	0.540

- 1) Storage time starts counting on the 1st day the land discharge begins

STORAGE PRICES FOR PRODUCTS RECEIVED **BY LAND** WITH A SPECIFIC WEIGHT **LESS THAN 60 KG/HL**

(Depending on the used storage periods - €/mt/day)

Storage period	€/mt/day
61-75 DAYS	0.105
76-90 DAYS	0.146
91-105 DAYS	0.200
106-120 DAYS	0.279
121-135 DAYS	0.367
136-150 DAYS	0.520
> 150 DAYS	0.649

- 1) Storage time starts counting on the 1st day the land discharge begins

1.6

IN/OUT SERVICE

(land reception, including storage)

8 DAYS

9 - 30 DAYS

31 - 60 DAYS

(Depending on the used storage periods - €/mt)

Grain	2.369	4.454	8.604
Other Products	2.762	5.433	9.683

1.7

STORAGE PRICES FOR PRODUCTS THAT CHANGE OWNERSHIP IN THE SILO, BY TRANSFER

The new owner shall be charged according to the storage prices that were being applied to the previous owner.

TRAFARIA PORT TERMINAL

PRICES
AND
CONDITIONS



SiloTagus



The public service provision at the Trafaria Port Terminal guarantees the following average daily discharge rates:

- **Cereal (grain / free flow) discharge: 8 000 mt/day**
- **Flours/meals (non free flow) discharge: 5 000 mt/day**

These values are valid in case of:

- Only one vessel is discharging at the Terminal, and
- For "bulk carrier" type vessels, without obstacles to the operation of the unloaders, non-self-unloading, box shaped, open shelter, and without separators between cargoes nor fumigation bands, and
- Availability of storage space.

Other factors may invalidate the guaranteed discharge rates:

- Products outside standard conditions (pulverulence/dustiness, adhesiveness, presence of foreign materials, product damage, etc.)
- Delay at the start or during discharge due to reasons attributable to the ship or the cargo
- Stoppages due to rain or meteorological conditions that prejudice the operability of the discharge
- Force Majeure cases: strikes, epidemics, unforeseen equipment failures, power supply cuts, etc.
- Serious breakdowns in unloaders.

2.1

BASE BILLING PRICES FOR TRAFARIA PORT TERMINAL

Vessel discharge service, including storage

8 DAYS

9 - 30 DAYS

31 - 60 DAYS

(Prices vary depending on used storage periods and the tonnage to be discharged at Trafaria, per vessel - €/mt)

	Until 12 500 mt	12 501 mt to 25 000 mt	25 001 mt to 35 000 mt	More than 35 000 mt	Until 12 500 mt	12 501 mt to 25 000 mt	25 001 mt to 35 000 mt	More than 35 000 mt	Until 12 500 mt	12 501 mt to 25 000 mt	25 001 mt to 35 000 mt	More than 35 000 mt
			(c)	(c)								
Grain of European Union origin	7.978	7.045	6.998	6.963	8.862	8.787	8.679	8.739	12.371	12.265	12.239	12.205
Wheat from Third Countries	8.542	7.124	7.096	7.063	8.862	8.787	8.753	8.739	12.209	12.025	11.993	11.987
Corn from Third Countries	8.542	8.496	8.462	8.312	12.449	12.299	12.629	12.615	15.911	16.193	16.158	16.125
Rapeseed and other grain products (a)	7.256	7.225	7.175	6.963	11.489	11.439	11.438	10.988	15.183	15.118	15.097	14.663
Manioc	12.774	12.744	12.553	12.218	16.267	16.028	15.949	15.471	16.267	16.028	15.949	15.539
Citrus pulp, soy bean flours, sunflower flours, or other flours	12.580	12.550	12.362	12.033	14.966	15.784	15.706	15.237	17.346	17.113	17.034	16.521
Other types of pellets or flours, sunflower seeds and miscellaneous (b)	12.871	12.790	12.649	12.317	17.804	17.536	17.473	16.916	17.804	17.536	17.473	16.916

(a) If the importer has signed up the Loyalty Agreement and exceptionally for vessel discharges with more than 30 000 metric tonnes of soya bean or rape seed, the discharge price, including 30 days of storage, shall be: **6.080**

(b) If the importer has signed up the Loyalty Agreement and there is no other vessel discharging simultaneously, the discharge price, including 30 days of storage, for vessel discharges **above 10 000 metric tonnes of sunflower seed with a moisture content of less than 8%**, at a minimum daily rate of 8 000 metric tonnes, shall be:

Until 12 500 mt	12 501 mt to 25 000 mt	25 001 mt to 35 000 mt	More than 35 000 mt
10.299	10.231	10.120	9.858

(c) The price of dispatching products for outside SILOTAGUS facilities during the discharge, from vessels discharging above 25 000 metric tonnes, benefit from 5% off the discharge price with 8 days of storage included.

2.2

STORAGE PRICES FOR PRODUCTS WITH A SPECIFIC WEIGHT OF
60 KG/HL OR GREATER
 AFTER THE 30 OR 60 DAYS ⁽²⁾ INCLUDED IN THE DISCHARGE PRICE

(Depending on the used storage periods - €/mt/day)

Storage period	€/mt/day
61-75 DAYS	0.087
76-90 DAYS	0.092
91-105 DAYS	0.125
106-120 DAYS	0.224
121-135 DAYS	0.287
136-150 DAYS	0.413
> 150 DAYS	0.476

- 1) Storage time starts counting on the 1st day the vessel discharge begins, except in the case of vessel discharges above 25 000 metric tonnes, in which case the counting will start on the 8th working day after the vessel discharge begins
- 2) Depending on whether the importer has signed up the Loyalty Agreement or not

2.3

STORAGE PRICES FOR PRODUCTS WITH A SPECIFIC WEIGHT
LESS THAN 60 KG/HL
 AFTER THE 30 OR 60 DAYS ⁽²⁾ INCLUDED IN THE DISCHARGE PRICE

(Depending on the used storage periods - €/mt/day)

Storage period	€/mt/day
61-75 DAYS	0.104
76-90 DAYS	0.110
91-105 DAYS	0.150
106-120 DAYS	0.268
121-135 DAYS	0.344
136-150 DAYS	0.497
> 150 DAYS	0.571

- 1) Storage time starts counting on the 1st day the vessel discharge begins, except in the case of vessel discharges above 25 000 metric tonnes, in which case the counting will start on the 8th working day after the vessel discharge begins
- 2) Depending on whether the importer has signed up the Loyalty Agreement or not

STORAGE PRICES FOR PRODUCTS RECEIVED **BY LAND** WITH A SPECIFIC WEIGHT OF **60 KG/HL OR GREATER**

(Depending on the used storage periods - €/mt/day)

Storage period	€/mt/day
61-75 DAYS	0.087
76-90 DAYS	0.092
91-105 DAYS	0.125
106-120 DAYS	0.224
121-135 DAYS	0.287
136-150 DAYS	0.413
> 150 DAYS	0.476

- 1) Storage time starts counting on the 1st day the land discharge begins

STORAGE PRICES FOR PRODUCTS RECEIVED **BY LAND** WITH A SPECIFIC WEIGHT **LESS THAN 60 KG/HL**

(Depending on the used storage periods - €/mt/day)

Storage period	€/mt/day
61-75 DAYS	0.104
76-90 DAYS	0.110
91-105 DAYS	0.150
106-120 DAYS	0.268
121-135 DAYS	0.344
136-150 DAYS	0.497
> 150 DAYS	0.571

- 1) Storage time starts counting on the 1st day the land discharge begins

2.6

IN/OUT SERVICE

(land reception, including storage)

8 DAYS

9 - 30 DAYS

31 - 60 DAYS

(Depending on the used storage periods - €/mt)

Grain	2.369	4.454	8.948
Other Products	2.762	5.433	10.070

2.7

STORAGE PRICES FOR PRODUCTS THAT CHANGE OWNERSHIP IN THE SILO, BY TRANSFER

The new owner shall be charged according to the storage prices that were being applied to the previous owner.

2.8

LOADING VESSELS AT TRAFARIA PORT TERMINAL

(minimum invoice amount: 1 500 metric tonnes/vessel)

Grain products	3.570 €/MT
Pellet products	4.767 €/MT

BARGE

RIVER
TRANSPORT



SiloTagus



- 3.1 River transfer of grain products received in Trafaria to Beato Terminal using the SILOTAGUS barge, in addition to discharge or road reception at Trafaria.

PRICE FOR TRAFARIA/BEATO TRANSFER

(minimum invoice amount: 2 100 mt)

2.565 €/mt

- 3.2 The price above refers to the transfer of grain products between the Terminals of Trafaria and Beato. As river transfer is classified as additional handling, it will be carried out in accordance with the availability of the vessel and the operational availability at both terminals.
- 3.2.1 Products transferred using SILOTAGUS' barge, **during** the discharge of a vessel at Trafaria Terminal, benefit from 60 days' free storage at Beato Terminal, starting from the beginning of the vessel discharge at Trafaria Terminal. After the end of this period, storage will be charged according to the storage prices in force for the Beato Terminal.
- 3.2.2 Products transferred using SILOTAGUS' barge, **after** the discharge of a vessel at Trafaria Terminal, benefit from 30 days' free storage at Beato Terminal, starting from the beginning of the barge discharge. After the end of this period, storage will be charged according to the storage prices in force for the Beato Terminal.
- 3.3 Quotes may be provided for transfers with different origins or destinations upon request.

THIS SERVICE IS TEMPORARILY UNAVAILABLE.

LOADING OF GRAIN PRODUCTS ONTO THIRD-PARTY BARGES AT TRAFARIA

(minimum invoice amount: 1 500 mt/barge)

2.500 €/mt

- 3.4 Loading of third-party barges at Trafaria, or the discharge of such barges at both Trafaria and Beato, are likewise subject to the operational availability at those Terminals, in particular regarding the priority given to international traffic vessel discharges.
- 3.5 Discharging third-party barges at Trafaria or Beato Terminals shall be charged according to vessel discharge prices at the respective Terminal. Discounts may be granted per Client based on the tonnage discharged.
- 3.6 In cases where storage space at Trafaria Terminal is insufficient, slowing down discharging at that Terminal and delaying the affected vessels, while there is available pier and storage space at the Beato Terminal, there is the possibility for vessels to lighten part of the cargo at Trafaria in order to be able to complete its discharge in Beato.

In cases where, even so, the tonnage to be relieved at Trafaria exceeds the possibilities of this Terminal, it may still be possible to make an immediate river transfer of that cargo to Beato.

GENERAL CONDITIONS



SiloTagus



GENERAL TERMS AND CONDITIONS OF INVOICING

- 4.1 The prices set out in this Price List and Conditions may be eligible for a client loyalty premium at the Port of Lisbon, provided that such intention is previously communicated to SILOTAGUS and that Loyalty Agreement attached hereto is duly validated and signed by both SILOTAGUS and the Client.
- 4.2 Invoicing shall be issued on the date of discharge, on the basis of the prices set out in the Price List, which include eight (8) days of storage. Any quantities remaining in silo at the end of the eighth (8th) day and of the thirtieth (30th) day shall be subject to additional storage charges, in accordance with the applicable storage price differentials.
- 4.3 The first effective day of discharge, irrespective of the time at which it commences, shall be deemed to constitute the first day for the purposes of counting the storage period, except in the case of vessel discharges above 25 000 metric tonnes carried out at the Trafaria Terminal, in which case the first day of counting shall be the eighth (8th) working day after the beginning of such discharge.
- 4.4 Products that remain stored in silos longer than the sixty (60) days included in the Discharge and Land Reception Price Lists, the rates set out in the corresponding Storage Price Lists for each Terminal and type of operation shall additionally apply.
- 4.5 This Price List and Conditions for the Provision of Services shall apply only to operations commencing on or after 1 January 2026. Prices and conditions in force prior to that date remain valid, accordingly, for operations commenced before such date.
- 4.6 The prices set out in this Price List shall be subject to potential increases for exceptional reasons, in particular in the event of significant rises in the cost of input factors.

**DISCHARGE AND STORAGE SERVICES
ADDITIONAL CHARGES**

5.1 **PRICES FOR EXTRA SERVICES TO BE PROVIDED BY SILOTAGUS,
AT THE REQUEST OF THE CLIENT OR UPON PRIOR AUTHORIZATION:**

a) **Batch merging** **€/mt 1.078**

b) **Aeration/recirculation due to inherent characteristics of the goods** **€/mt 1.832**

c) **Product desinfestation** **€/mt 2.447**

d) **Logistic support service for product dispatch** **€/mt 0.128**

Delivery of products after 5 pm, WWSSHEX			
5 pm to 8 pm	€/period 1441.28	8 pm to 12 pm	€/period 2760.70

f) **Transfer of ownership of the entire batch of product in silo** **€/mt 0.291**

- . Applies only when requested in writing by both parties;
- . The transfer of ownership shall be charged to the previous owner, with the new owner assuming responsibility for the subsequent storage charges according to the Price List in force;
- . The above price refers to the first transfer carried out. Such price shall be increased by 50% for each subsequent transfer of the same product.

g) **Land reception and dispatch of product returned for reasons beyond SILOTAGUS' control** **€/truck 200.40**

h) **Individual storage of a batch up to 500 metric tonnes due to possible product** **€/week 1627.14**

i) **Removal and disposal of fumigation materials, excluding fumigation sleeves** **€ 738.30**

j) **Other extra services not covered in the preceding points shall be subject to negotiation on a case-by-case basis, according to the costs involved.**

5.2

INCREASE OF BASE PRICES DUE TO NON-COMPLIANCE WITH THE GENERAL CONDITIONS OF SERVICES TO BE PROVIDED BY SILOTAGUS:

- | | | |
|----|---|----------------------------|
| k) | Vessel not meeting bulk carrier conditions | €/hold 3 185.25 |
| l) | The discharge of a hold, or a subdivision of a hold, with a cargo below 25% of its capacity shall be subject to a 25% increase in relation to the respective unit discharge price. | |
| m) | Unproductivity of equipment or port personnel for reasons beyond SILOTAGUS' control during the period (8 am to 5 pm or 5 pm to 12 pm) and per unloader | €/unloader 6 702.75 |
| n) | Manual removal of materials foreign to the cargo from the vessel's hold per period (8 am to 5 pm or 5 pm to 12 pm) | €/period 6 702.75 |
| o) | High level of pulverulence of goods
(increase on base price) | 15% |
| p) | Presence of foreign materials mixed with the goods
(increase on base price) | 15% |
| q) | The minimum tonnage of products to be considered for invoicing shall be 1 500 metric tonnes for vessel loading services, 2 900 metric tonnes for vessel discharge, 50 metric tonnes for land reception, and 500 metric tonnes for storage services at the Trafaria Terminal or 300 metric tonnes in the case of Beato Terminal. | |
| r) | Any other extra services not covered in the foregoing points shall be subject to negotiation on a case-by-case basis according to the costs involved. | |

GENERAL CONDITIONS FOR THE PROVISION OF SERVICES

6 The provision of discharge and storage services by SILOTAGUS is subject to the availability of berths and storage space at the time, as well as to the “**first come, first served**” principle, as long as the first vessel to arrive has a berth available for discharge, except in exceptional circumstances as established in the Operating Regulations of each Terminal. The prices in force shall be deemed valid only under the following conditions:

6.1 For bulk carrier vessels, without obstacles to the operation of discharge equipment, **non self-unloading, box shaped, open shelter**, and without separators between cargoes or fumigation bands.

6.2 For **standard** homogeneous products with discharge temperatures below 40° C, a maximum relative humidity of 14%, and not requiring aeration during discharge due to prior fumigation, the minimum quantities to be handled at a single Terminal shall be above 1 500 metric tonnes for vessels loading, above 2 900 metric tonnes for vessel discharging, or above 50 metric tonnes for land reception. For storage, the minimum invoice amounts are 500 metric tonnes at the Trafaria Terminal and 300 metric tonnes at the Beato Terminal.

For oil seeds in particular, the temperature and the relative humidity, as checked by a surveyor contracted by SILOTAGUS and measured in all holds of the vessel, shall not exceed 40° C and 13%, respectively. If any of these parameters exceed these limits, SILOTAGUS reserves the right to refuse acceptance of the product in its facilities.

6.3 Vessels destined to the Port of Lisbon, for which discharge is requested to SILOTAGUS, shall be fully discharged at its Terminals. SILOTAGUS reserves the right to refuse acceptance of discharges started elsewhere within the Port of Lisbon.

6.4 With the Trafaria Terminal having two berths for vessel discharge, SILOTAGUS may, for operational reasons, decide to move the vessel operating at berth nr. 1 to berth nr. 2, as long as the vessel is capable of operating at that berth and maintaining its priority as the first-received vessel relative to any vessel subsequently occupying berth no. 1.

Such vessel movement from berth nr. 1 to berth nr. 2 shall be carried out without any “shifting” costs to the vessel and without prejudice to its guaranteed minimum discharge rate.

6.5 The acceptance by SILOTAUGS of vessels presented for discharge is always made on the assumption that the importer consents to the potential unavailability of a berth for discharge or to any limitation of the discharge rate due to lack of storage space.

- 6.6 Vessel discharges shall take place between 08:00 and 24:00 (with breaks for meals between 12:00 and 13:00 and between 20:00 and 21:00), WWSSHEX, WP (excluding Christmas Eve and Carnival day). Counting of time for computing the discharge rate shall be made within the following constraints, provided that the vessel is berthed and ready to start working:
- **Start of counting:** within the working period previously agreed by the Client or its representative;
 - **End of counting:** at the time the discharge is declared complete.
- 6.7 Land reception and/or dispatch of products shall take place between 08:00 and 12:00 and between 13:00 and 17:00, WWSSHEX (excluding Christmas Eve and Carnival day) on a **“first in, first out”** basis.
- 6.8 If an abnormal increase in the temperature of the product stored in the silos is detected, the importer shall be informed of the need to recirculate all or part of the product at its own expense. If, despite recirculation, the temperature nevertheless exceeds 40° C and the importer is notified of the need to remove the product promptly from SILOTAGUS facilities but fails to do so, the product shall be removed to another location, also at the importer’s expense.
- 6.9 Any claims regarding the weight and homogeneity of products handled at SILOTAGUS shall only be considered if made prior to the products leaving its facilities.
- 6.10 All products handled at SILOTAGUS facilities are covered by a Multi-Risk Industrial insurance, covering the following risks: Fire, Lightning Strike and Explosion, Storms, Floods, Water Damage, Aircraft Falling, Collision or Impact by Land Vehicles or Animals, Accidental Oil Spills, Leaks from Fire Protection Hydraulic Systems, Seismic Events, Landslides, Strikes, Riots and Civil Disturbances, Theft or Robbery, Loss or Damage to products in transit between discharge locations and storage facilities, and Loss or Damage resulting from structural collapse (all these risks are covered up to €15,762,272.00 per claim and per year); Electrical Risks (up to €125,000.00); and Spontaneous Combustion, provided it is a fortuitous, sudden and unforeseen occurrence (in which case, the Client shall bear the costs of the deductible – €25,000.00 – as well as any subsequent expenses).
- 6.11 Force Majeure
- 6.11.1 SILOTAGUS shall not be held liable for any loss or damage resulting from disruption (delay or interruption) in the provision of reception, transfer, handling, storage, dispatch, shipment, and transportation services of bulk foods activities caused by force majeure, which shall be understood as events that are unforeseeable and uncontrollable, the effects of which occur independently of SILOTAGUS’ will or personal circumstances and which evidently prevent the fulfillment of its service obligations.

- 6.11.2 The following shall constitute, in particular but not exclusively, events of force majeure:
- a) Acts of God, Acts of God, actions by public enemies, acts or threats of terrorism, war or acts of war, hostilities or invasion, embargoes, military coups or armed conflicts, revolutions, mutinies, riots, uprisings, insurrections, subversion, unrest, civil commotion, public demonstrations, sabotage, piracy, acts of vandalism, explosions, lightning, fires, floods, tsunamis, storms, strong winds, cyclones, droughts or earthquakes, and other natural disasters directly affecting its activity.
 - b) Unforeseen breakdown of equipment or machinery used in the provision of SILOTAGUS' services, not caused by any negligent act or omission of SILOTAGUS or its subcontractors and occurring notwithstanding proper maintenance.
 - c) Outages, power failures or interruptions in the supply of electricity, irrespective of their cause.
 - d) Nuclear explosions, chemical or radioactive contamination, or ionizing radiation.
 - e) Meteorites.
 - f) Epidemics, pandemics, plagues, or quarantines.
 - g) Blockades or closure of the Port.
 - h) Strikes, lockouts or any other industrial action.
 - i) Lockdowns, mandatory curfews or restrictions on mobility of a national or local nature which may result in limitations on movement within the geographical areas where SILOTAGUS' Terminals are located.
- 6.12 Products stored in SILOTAGUS' silos may benefit from the suspension of customs duties for up to ninety (90) days from the date of the vessel's berthing, at no additional cost, by using the Temporary Customs Warehouse status granted to SILOTAGUS, or for an indefinite period if, in the meantime, the importer requests the Portuguese Customs Authority to place the cargo under the Customs Warehousing Arrangement, as SILOTAGUS is duly authorized by the Portuguese Customs Authority to store such products under its custody.
- 6.13 The payment term for SILOTAGUS' invoices shall be thirty (30) days from their dates of issue. After that period, late-payment interest shall accrue at the legal rate in force, without prejudice to SILOTAGUS' exercising the right of retention, whereby SILOTAGUS reserves the right to dispose of the cargo under such terms and conditions as it deems appropriate if, within a period of reasonable physical preservation thereof, it has not been paid in full for its credits.
- 6.14 If the product stored from a given operation amounts to less than 200 metric tonnes and has been stored for more than ninety (90) days, invoicing shall be issued based on eighty per cent (80%) of the nominal capacity of the smallest cell of the Terminal, even if the actual quantity stored is lower.
- 6.15 All services provided by each Terminal shall comply with the respective Operating Regulations.

FOOD SAFETY GUARANTEE

- 7 SILOTAGUS has a Food Safety Management System (SGSA), certified since August 2009, in compliance with the requirements of standard NP EN ISO 22 000.

This System, being the most comprehensive in the scope of Food Safety, includes the HACCP Plan, mandatory under Regulation (EC) No 852/2004 and implemented since 2006, the Requirements and the Operational Prerequisite Programs, the Good Hygiene and Operating Practice Manual, and other management instruments required to comply with the requirements of ISO 22 000.

Certificate no. PT09/02854, issued by SGS ICS, an accredited certification body for that purpose, covers the full range of services provided by SILOTAGUS in the activities of Reception, Handling, Storage, Treatment, Drying, Shipping, and Transport of Grains and Other Solid Food Bulk Commodities, carried out at all of the Company's facilities:

- TRAFARIA PORT TERMINAL.
- BEATO PORT TERMINAL.
- VALE DE FIGUEIRA SILOS.

The update of the certification to standard NP EN ISO 22 000 was completed on 23 June 2025 and is valid for three (3) years, until 29 June 2027.

This makes it possible to continue safeguarding the Food Safety for products handled at all stages of SILOTAGUS' activities, as a result of the application of the following procedures:

RECEPTION / DISCHARGE – during vessel discharge

Monitor the atmosphere of the holds (through a qualified company), with the actual beginning of discharge being, for safety reasons, conditional upon verification that there is a “non-toxic” atmosphere in the holds to be discharged, based on the conformity of the results obtained from the measurement of relevant parameters.

RECEPTION / DISCHARGE – during any type of reception

Sampling-based inspection of received products with respect to macroscopic appearance, temperature measurement, moisture content, and determination of specific weight in the case of grains, always communicating the results to the Client/Recipient of the cargo upon arrival of each batch of product.

If during this reception inspection any infested product is detected, SILOTAGUS shall only commence or continue the discharge upon express communication from the Client/Recipient, confirming the reception of the infested cargo and accepting the costs of the product disinfection service, as set out in point 5.1(c) of the current Price List and Conditions for the Provision of Services by SILOTAGUS.

DURING STORAGE

Carry out regular and systematic temperature control of products stored in SILOTAGUS' silos, in accordance with the HACCP Plan.

Detection of an abnormal temperature in a silo product triggers a "State of Suspected Condition" alert, which will automatically initiate daily monitoring of this parameter. If this abnormal temperature persists or worsens, a sample shall be taken to check for infestation, which may result in one of two possible outcomes:

a) Confirmed Infestation

SILOTAGUS informs the Client, but reserves the right to intervene immediately by carrying out the necessary disinfection of the stored grain.

b) Not Confirmed Infestation

The situation shall always be evaluated with the Client, and aeration/recirculation of the stored product may be required subject to the Client's authorization.

In both situations, the charges set out in point 5.1 of the current "Price List and Conditions for the Provision of Services by SILOTAGUS" shall apply.

DURING DISPATCH

The provision of services by SILOTAGUS ends at the time when the product is dispatched and received by the Client/Recipient within the Terminal/Silo.

Once the product is dispatched, liability for the conditions of transport and/or packaging rests solely with the Client/Recipient or the entity contracted to perform the service.

SILOTAGUS does not conduct regular checks on the conditions under which the means of transport arrive at the silos but undertakes to provide full cooperation whenever requested.

The application of the Food Safety System to all processes and stages of the Company's activities, in particular during discharge/reception and storage, ensures that the product retains, throughout its stay in the silos, characteristics identical to those recorded and communicated to the Client at the time of reception. For this reason, additional inspections of the products at the dispatch stage are not deemed necessary.

DURING TRANSPORT - at SILOTAGUS' expense

All cleaning, functional, and control procedures to ensure product safety during the transport stage shall apply to the means of product transport, whether performed by the "SILOTAGUS" barge or other land-based means during internal transfer operations.

DURING TRANSPORT – at the Client's expense

SILOTAGUS undertakes to provide cooperation, when requested, in the inspection of transport means carried out directly by the Client or by any other entity appointed by the latter.

OTHER FOOD SAFETY REQUIREMENTS

8.1

TRACEABILITY

SILOTAGUS guarantees the traceability of each batch of product handled at any of its facilities.

8.2

GENETICALLY MODIFIED ORGANISMS (GMOs), ALLERGENS AND OTHER COMMON CONTAMINANTS

Given the intrinsic characteristics of the facilities and product handling circuits at the Terminals/Silos, SILOTAGUS cannot guarantee absolute segregation of GMOs, allergens (soy, gluten, and lupin), or other common contaminants. However, it undertakes to provide full customer support and to follow the good practices prevailing in the international trade of the raw materials it stores and handles.

8.3

SAFE PRODUCTS

Promote the need to apply HACCP procedures and the implementation of good practices in Hygiene, Preservation, Maintenance, and Operation among the operators responsible for the production, marketing, and distribution of products received at SILOTAGUS' silos.

By raising awareness and promoting dissemination of these principles, SILOTAGUS aims to contribute to achieving the goal of closing the safe product guarantee cycle covering all stages of the food chain for grains and other food solid bulk commodities.

8.4

AUDITS OF THE FOOD SAFETY MANAGEMENT SYSTEM (SGSA)

The maintenance of the Food Safety Management System certification requires SILOTAGUS to comply with an annual plan of internal audits carried out by an independent entity, as well as external audits – annual follow-up audits and renewal audits carried out every three years by an accredited certification body.

Evidence of SILOTAGUS' performance in Food Safety shall be made available to Clients or other entities, upon request, by sending them audit reports or other documents supporting the Food Safety Management System and its certification.

9

VALIDITY OF THESE GENERAL CONDITIONS

The prices and conditions for the provision of SILOTAGUS' services set out in the preceding sections are subject to the applicable VAT rate and shall be valid only until 31 December 2026.

LOYALTY AGREEMENT

Between

First Party: **SILOTAGUS, S.A.**, headquartered at Beato Port Terminal, Rua da Cintura do Porto de Lisboa, 1950-318 Lisbon, hereinafter referred to as SILOTAGUS, represented by José Emílio Coutinho Garrido Castel-Branco and Maria de Fátima Simões Évora, respectively, Chairman and Member of the Board of Directors.

And

Second Party:, headquartered at, hereinafter referred to as, represented by in the capacity of

This Agreement is hereby signed to govern the conditions under which the discharge of food-grade bulk products intended for shall be carried out at SILOTAGUS' Beato and Trafaria Terminals during the year 2026:

1. All discharge services intended for in the Port of Lisbon shall be requested from SILOTAGUS to be carried out at its Terminals of Beato or Trafaria.
2. In accordance with point 4.1 of SILOTAGUS' Price List and General Conditions for the Provision of Services, in force for the year 2026, once the overall tonnage handled by during 2026 at SILOTAGUS' Beato and Trafaria Terminals reaches 50 000 metric tonnes of the various agri-food products, the discharge prices including storage, charged by SILOTAGUS, shall benefit from a customer loyalty premium corresponding to 5% of the prices stated in the Price List.
3. Additionally, all dispatchments of various agri-food products discharged at the Trafaria and Beato Terminals shall benefit from thirty (30) days of storage included in the discharge price, as well as an additional customer loyalty premium of 1% beyond 200 000 metric tonnes. From the thirty-first (31st) day onwards, such dispatchments shall incur storage charges according to the rates set out in points 1.2 or 2.2, depending on the Terminal, with the necessary adjustments to the periods indicated therein (where "from the 61st to the 75th day" appears, it shall read "from the 31st to the 45th day").
4. In the event of unavailability of storage space at SILOTAGUS' Terminals to accommodate any discharge request made by, the latter shall be released from maintaining loyalty for the operation in question, without thereby losing the right to the said premium for subsequent discharges requested in future from SILOTAGUS.
5. The loyalty premium, as well as any other benefits, shall be revoked if, by unilateral decision of, any of the discharges are allocated to another operator in the Port of Lisbon other than SILOTAGUS.

6. may lose the benefits of applying this Agreement if the arrival of its vessels is not made known to SILOTAGUS by the date of their departure from the port of loading at the latest in cases where due to such omission the discharge schedule must be altered to the detriment of third parties. However, even in the event of failure to notify the arrival date by the vessel's departure from the port of loading, the "first come, first served" principle governing the sequencing of discharges at each Terminal shall be respected.

7. All services provided by each Terminal shall comply with its respective Operating Regulations.

Executed in Lisbon, on the of 2026, in duplicate, with the original being held by SILOTAGUS and the duplicate held by

On behalf of SILOTAGUS

On behalf of